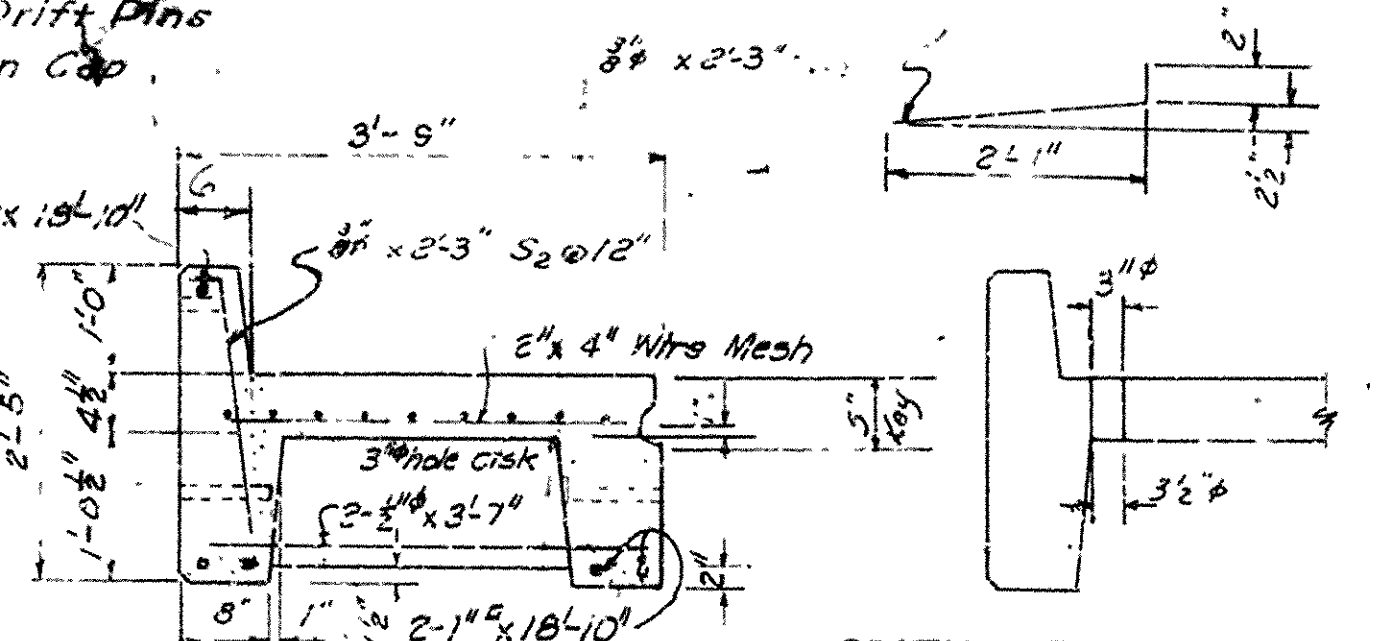
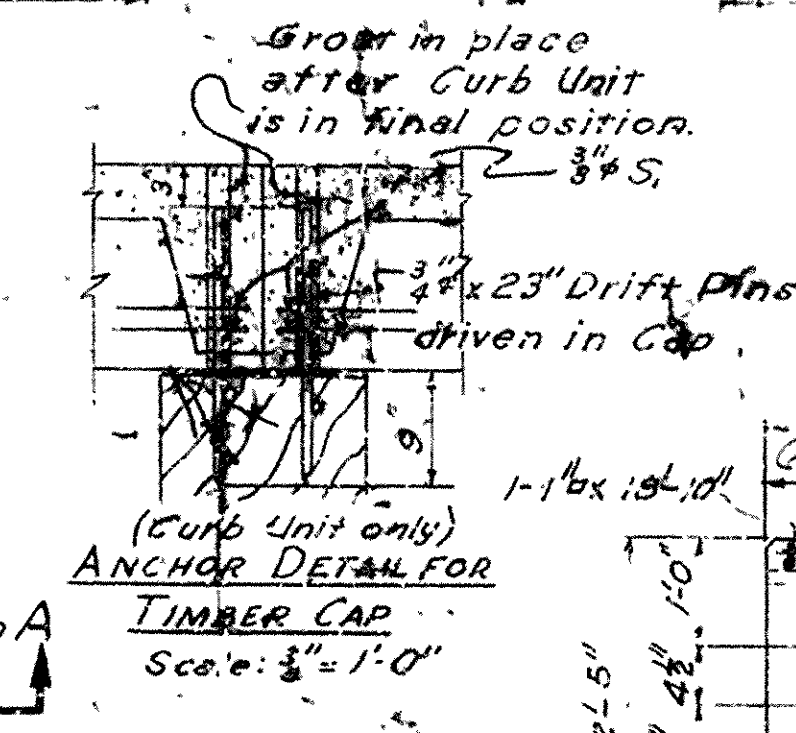
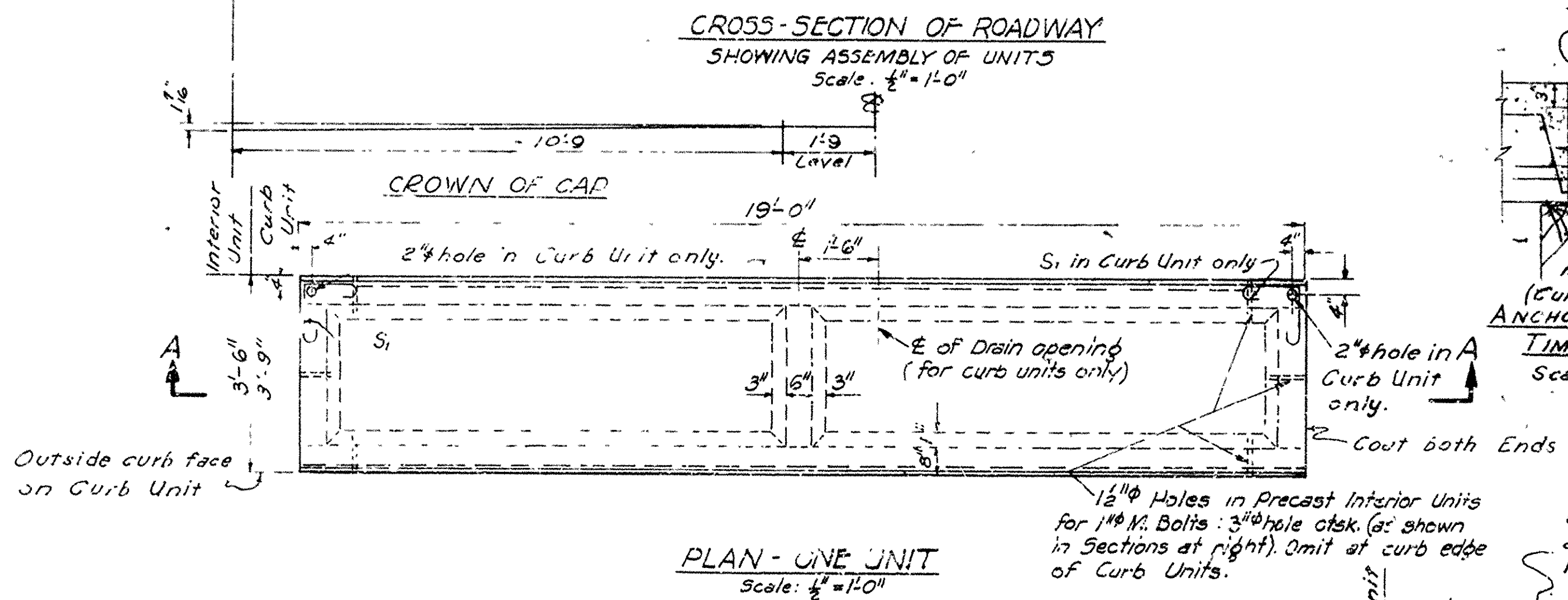
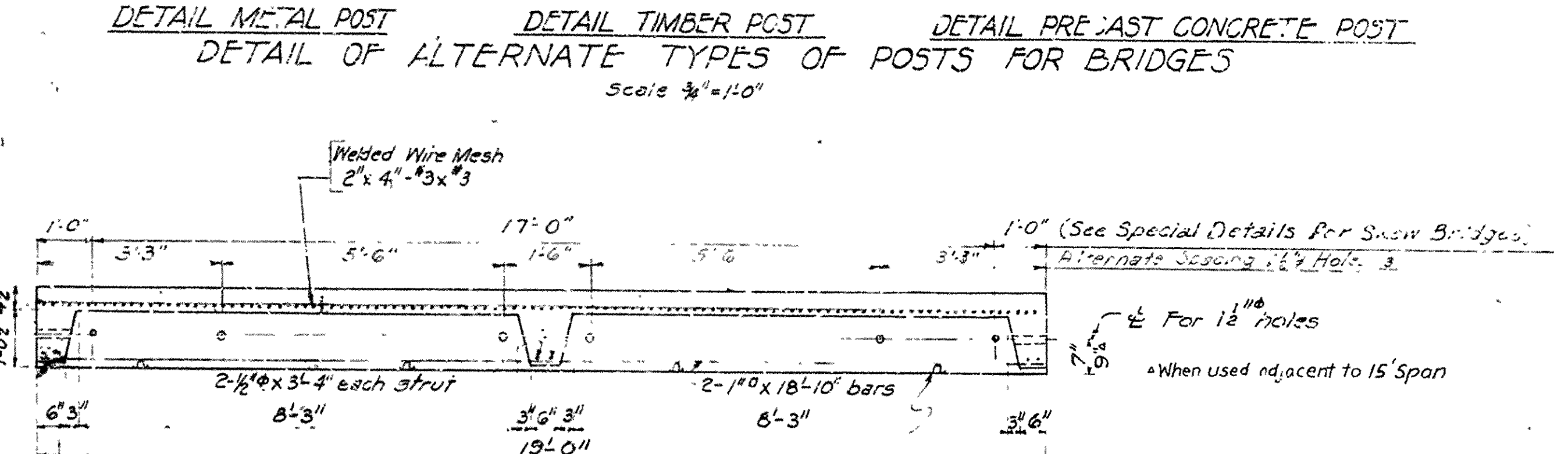
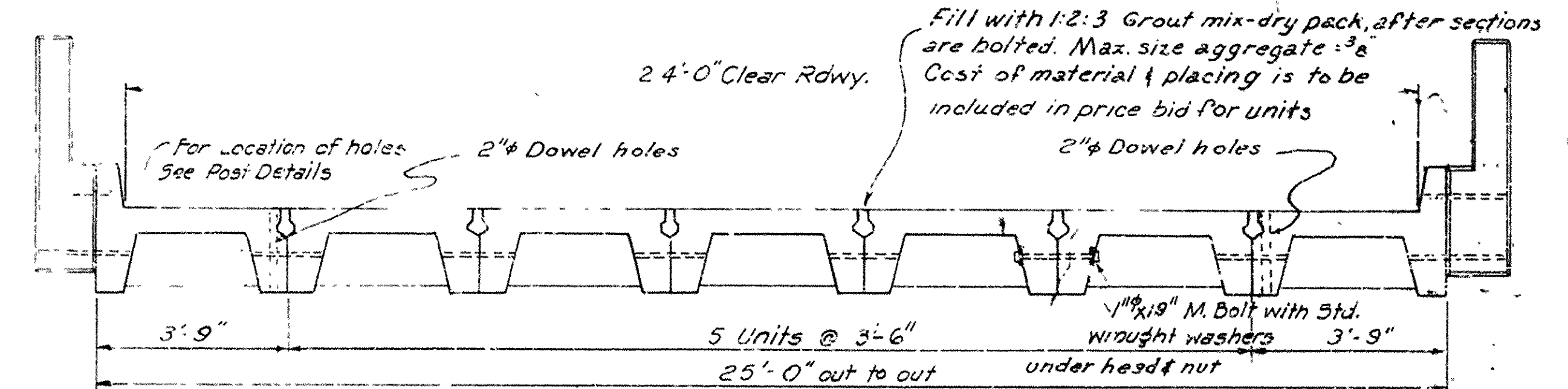
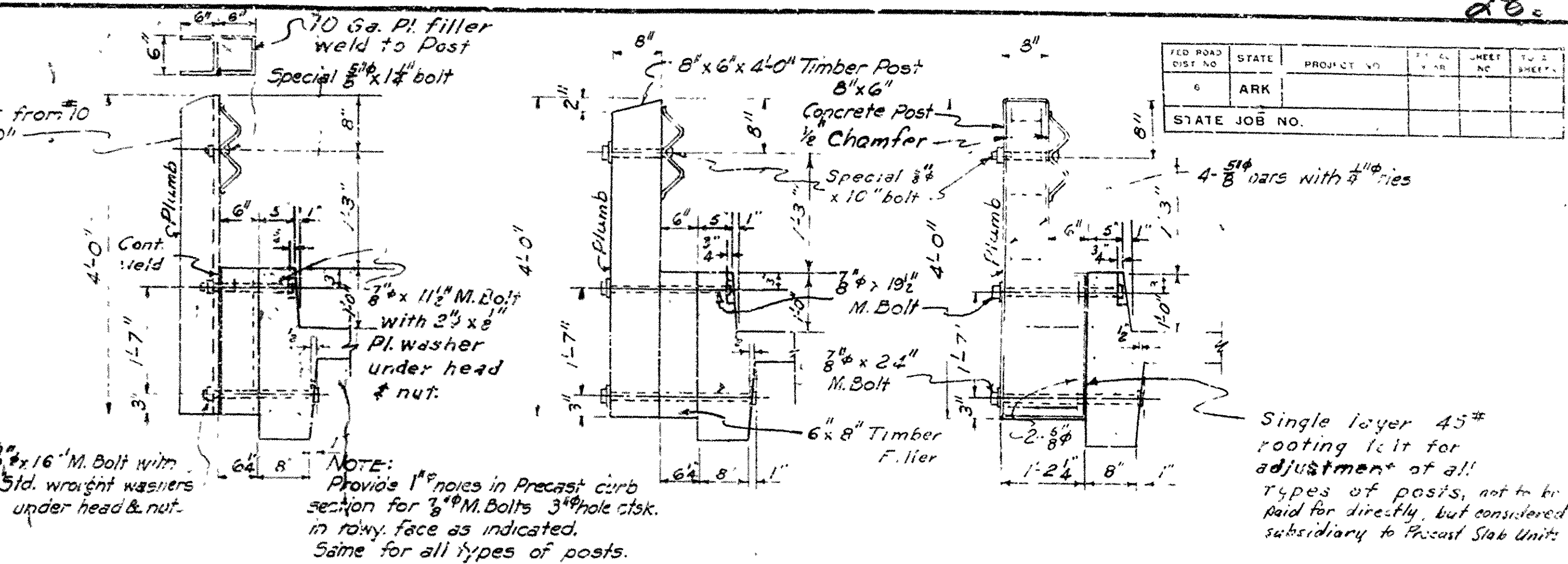
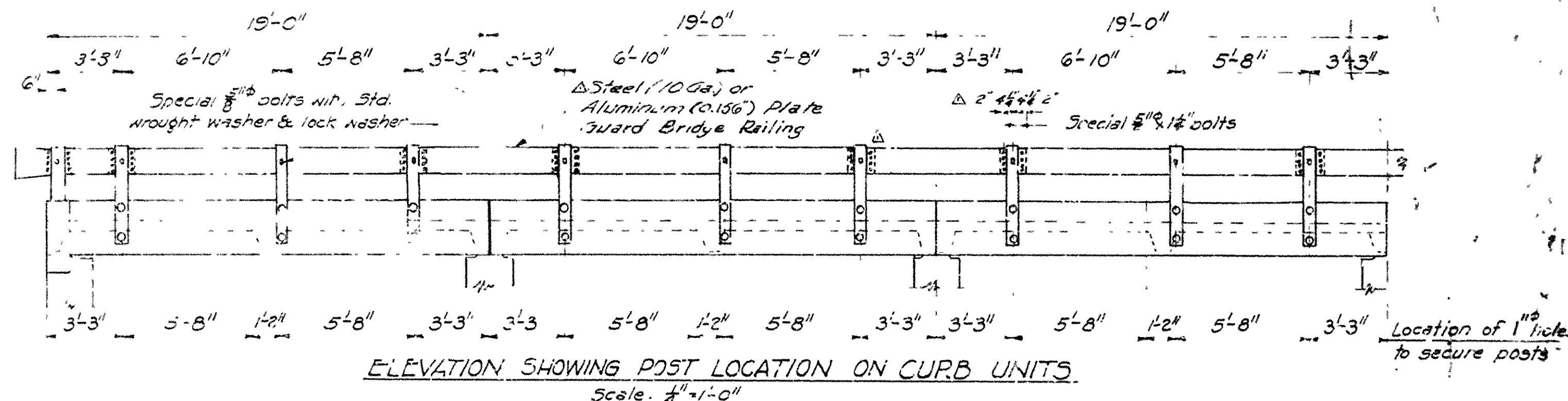


CALHOUN ROUTE 274 SEC. 3 LOG 17.00 BRIDGE NO. M2649

STATE	PROJECT NO.	SHEET NO.	TOTAL SHEETS
ARK			
STATE JOB NO.			



**NOTES**

All concrete to be Class "5". All exposed corners to be chamfered 1/4" unless noted. All other corners rounded to 1/4" radius. Reinforcing dimensions are to 1/2" of bars.

All reinforcing steel shall be accurately located in the forms and firmly held in place by means of steel wire supports. The wire supports will not be paid for directly but will be considered subsidiary to the item of Reinforcing Steel.

Wire mesh shall conform to the Specification for Welded Steel Wire Fabric for Concrete Reinforcement of the A.A.S.H.O. Specifications for Highway Materials, Designation M 55-37, (A.S.T.M. Designation A 185-37).

All machine bolts connecting rail posts to curb sections and special bolts shall be considered as subsidiary to the item of "Steel or Aluminum Plate Guard Bridge Railing."

Paint heads and nuts with aluminum paint after assembly is complete.

Specifications: - Arkansas Highway Commission Standard Specifications for Highway Construction, Edition of 1959.

Reinforcing steel shall be deformed bars, 2" infer or hard grade. Bolts connecting units will not be paid for directly but will be considered subsidiary to the bid price per slab unit.

A deviation of more than 1/8" in dimension or line will be cause for rejection of the unit.

SEE LAYOUT FOR SPECIAL DETAILS.

H-15 Loading

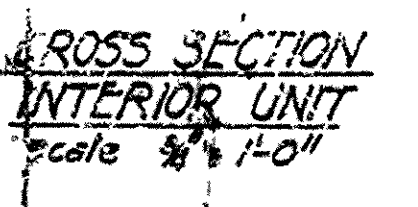
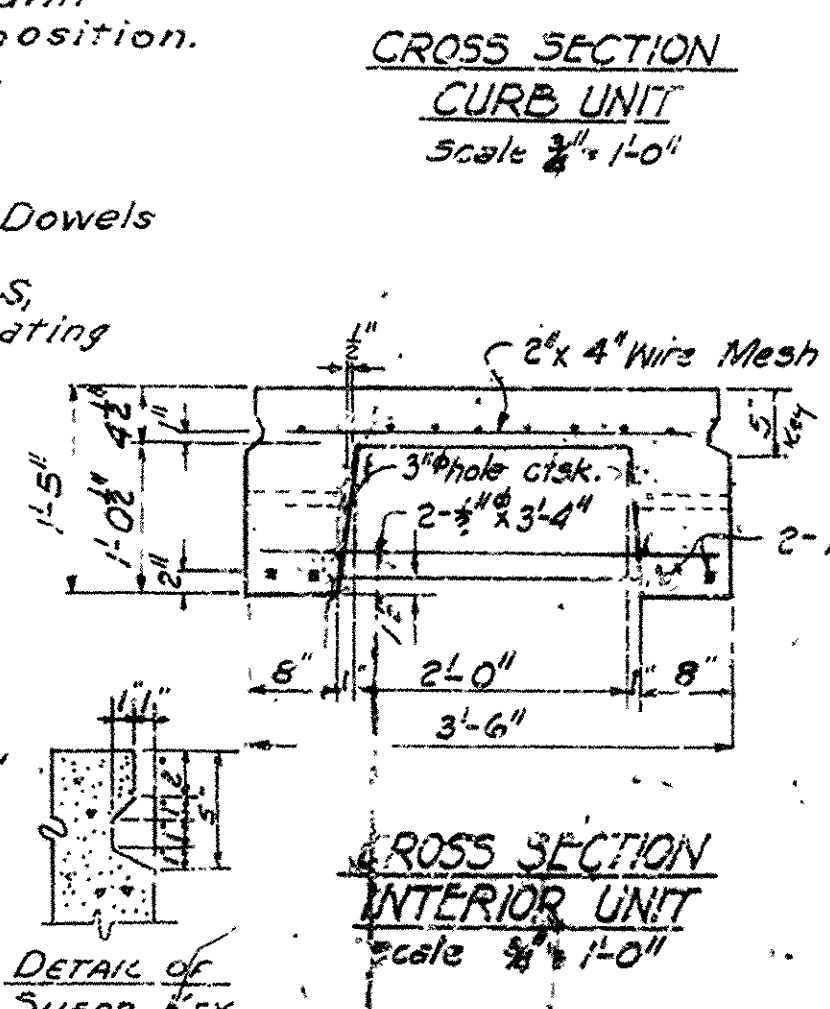
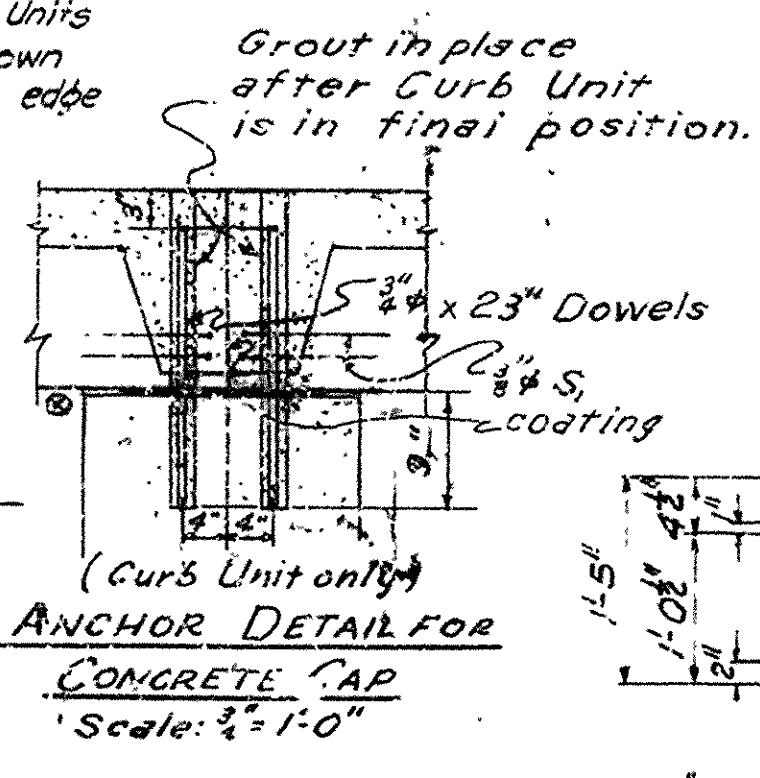
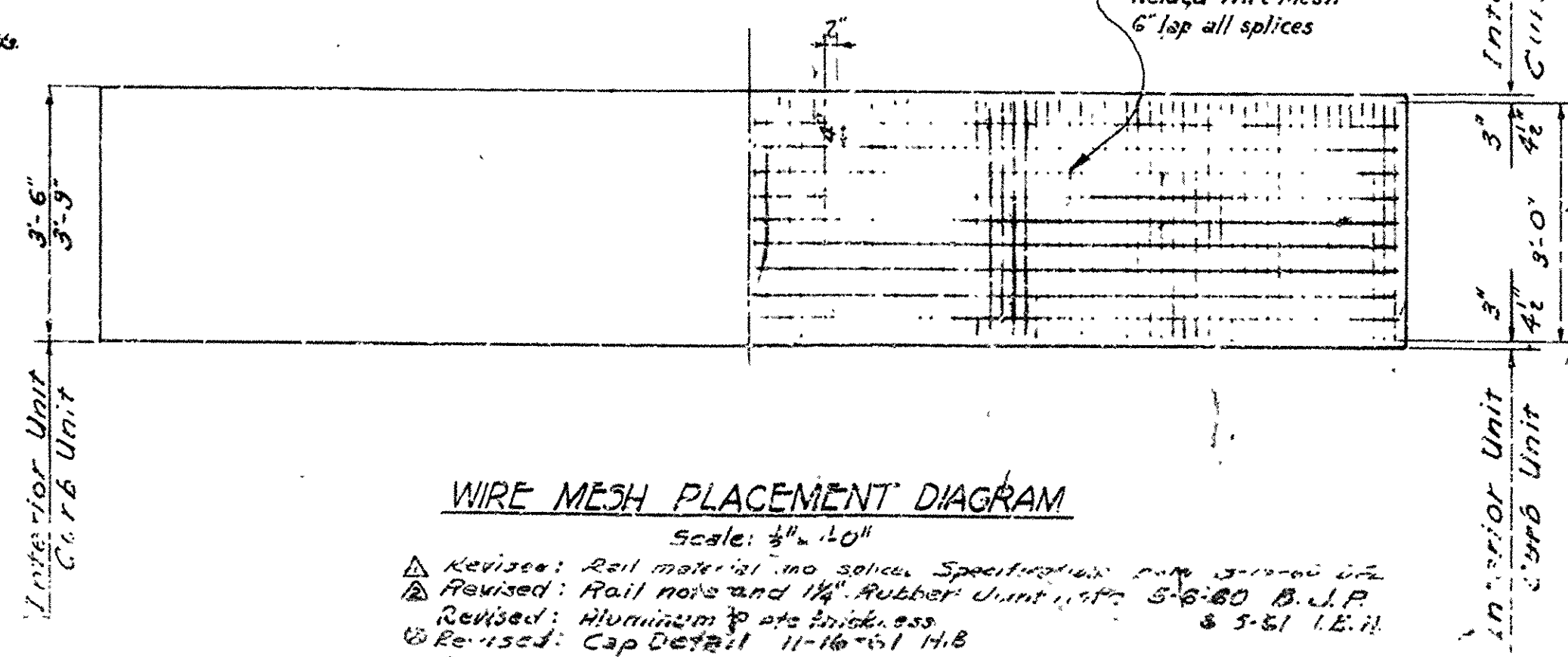
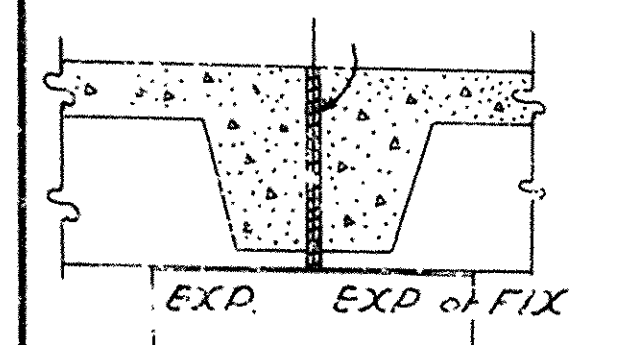
Stresses

Class "5" Concrete (n=10) 1200 #/sq ft

Reinforcing Steel 20,000 #/sq ft

Cold Drawn Wire Mesh 30,000 #/sq ft

1/4" Sponge Rubber compressed to and sealed with asphalt joint filler; not to be paid for directly but considered as subsidiary to Precast Slab Units.



Bid items for Precast Slab Units are "Precast Slab Curb Unit" "Precast Slab Interior Unit"

# DETAILS OF STANDARD PRECAST SLAB BRIDGE 19'-0" SPAN 24'-0" CLEAR ROADWAY

ROUTE SEC.

ARKANSAS STATE HIGHWAY COMMISSION

LITTLE ROCK, ARK.

Traced By: \_\_\_\_\_ Date: \_\_\_\_\_

Checked By: \_\_\_\_\_ Date: \_\_\_\_\_

BRIDGE NO. \_\_\_\_\_

DRAWING NO. 5306